



Chapter 3: Implementation: Recommended Projects

Special Projects – Node 5: University District



Existing assets and places of interest for the University District node.

Key Route 66 assets and places of interest:

1. Iconic and neon signage
2. Local lodging, restaurants, and shops; many in historic buildings.
3. Transit access
4. Historic buildings and iconic architecture
5. Entertainment venues
6. Public park
7. University of New Mexico

Location: Girard Boulevard to University Boulevard

Neighborhood Era: 1900's to today

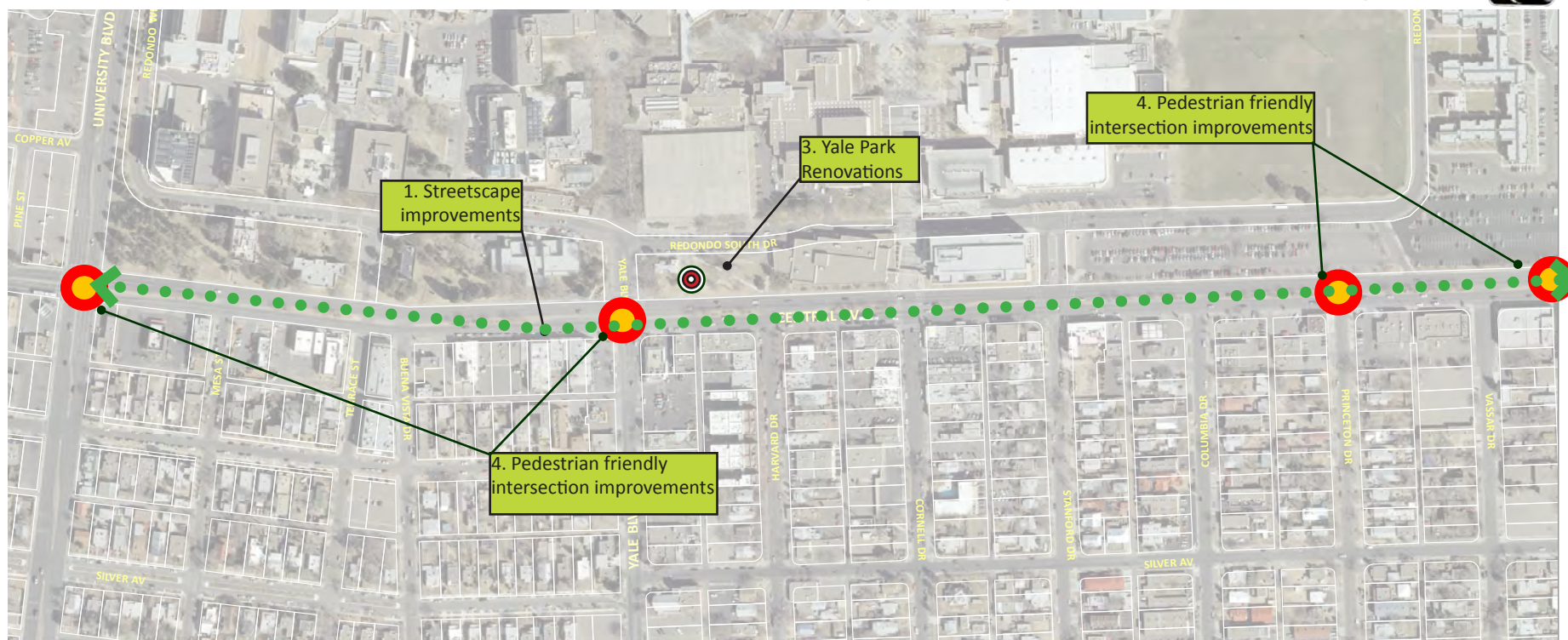
Route 66 asset rank: Moderate

Sector Development Plan: No

MR Plan: No

Context: The University area dates to the late 19th century providing housing to faculty and up and coming residents. In addition, four sanatoriums were located in the area. By the 1920's, the University neighborhoods grew to be one of the most fashionable neighborhoods in Albuquerque, with prominent residents, including Clyde Tingley, living on Silver Boulevard. In the 1960's, enrollment in the University began to rise and housing and businesses in the area began to cater to students, and this continues to be the case today. Traffic congestion began to be an issue at this time and continues to be an issue.

The area is home to historic buildings, neon signage and iconic structures that date to the Route 66 period.



Indicates location for Route 66 public space, see Amenity Kit for more information.

Envisioned projects and locations, see following pages for descriptions.

Intent: Improvements in the University district are intended to highlight Route 66 features while supporting the existing pedestrian scale live/work, restaurant and retail environment and surrounding university area. Proposed improvements include enhanced transit stops with Route 66 interpretive features, neon and Public art, enhanced pedestrian crossing at specific intervals on Central, a comprehensive pedestrian wayfinding system, and streetscape improvements along Central Avenue. Additional recommended projects include increased amenities at Yale Park and an urban trail linking University campuses with Route 66 related public art and interpretive elements along Central Avenue. These projects will require coordination with City departments regarding responsibilities for design, construction and maintenance.



Chapter 3: Implementation: Recommended Projects

Special Projects – Node 5: University District



Street trees (5)

1. Streetscape Improvements

Description: Introduce pedestrian streetscape amenities.

Location: Central Avenue, University Boulevard to Girard Boulevard.

- Install bulbouts and on-street parking.
- Incorporate street trees and landscaping where space is available.
- Consider creating small plazas of landscaping with seating and trash receptacles on leased portions of private property where ROW is too narrow to increase pedestrian realm.
- Incorporate a wayfinding system throughout University District.
- Install pedestrian street lighting.
- Create pedestrian refuges and bulb outs at the Girard Boulevard and Central Avenue intersection.
- Work with UNM to create landscape buffers for large parking areas.
- Work with UNM to create and maintain banners.



Urban Trail, (6)

2. Project: Urban Trail

Description: A multi-use trail system linking the University Main, North, South Campus and Sport facilities.

Location: Central Avenue, University Boulevard, Yale Boulevard, other local streets to be determined.

- Work with the University to develop a multi-use trail.
- Incorporate wayfinding signage, seating and landscaping.
- Light high traffic areas which are outside of residential areas.



Yale Park, public art, (6)

3. Project: Yale Park Renovations

Description: Increase amenities at Yale Park to encourage gathering and people watching.

Location: Yale Park.

- Work with the University to add pedestrian elements to the park.
- Develop spaces with seating and shade.
- Develop areas for vending or exhibiting.
- Consider incorporating a cafe structure and seating



4. Project: Central Avenue improved intersections

Description: Pedestrian improvements and bulbouts to facilitate crossing.

Location: University Boulevard and Central Avenue, Yale Boulevard and Central Avenue, Stanford Avenue and Central Boulevard, Princeton Avenue and Central Boulevard.

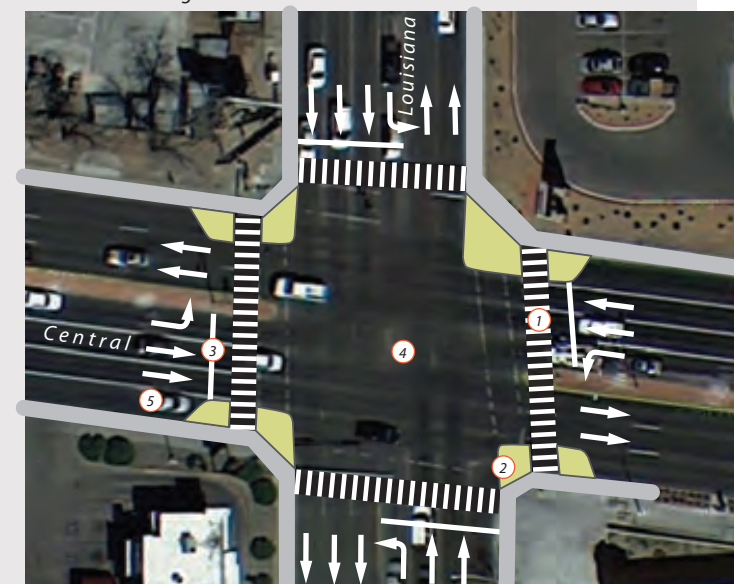
- Add signalized intersection at Princeton Avenue per MUTCD traffic standards.
- Use high definition crosswalk markings.
- Provide bulbouts and pedestrian refuges to reduce crossing distances.



Major Intersection without Bikes

(ex. Louisiana + Central)

- 1 Enhanced Pedestrian Crossing
- 2 Tightened Corners Bulbouts with Landscaping/Paving
- 3 10' Stop Bar for Cars
- 4 Increase Pedestrian Crossing Times
- 5 Onstreet Parking



Bulbouts, (6)

5. Transit Shelters

Description: Provide larger seating areas and more shade.

Location: Throughout University District.

- Provide adequate seating and shade for number of riders.
- Add shade elements where needed.
- Where possible create a shaded waiting plaza with multiple seating areas, shelters and landscaping.
- Incorporate wayfinding elements.
- Add Route 66 information.
- Add Route 66 logo and neon.
- Provide lighting.
- Create a digital hotspot for virtual Route 66 experiences.



Street trees, (5)