



## Chapter 3: Implementation: Recommended Projects

### Special Projects – Node 6: EDo District



Existing assets and places of interest for the East Downtown node.

#### Key Route 66 assets and places of interest:

1. Historic buildings, including the Special Collections Library, Whittlesy House/Albuquerque Press Club (1903) and Historic Huning Highland Neighborhood
2. Iconic and neon signage
3. Adaptive re-use of historic buildings, such as Old Albuquerque High School lofts, Parq Central Hotel and former drive-ins
4. Local lodging, restaurants, and shops many in historic buildings
5. Pedestrian environment
6. Mixed use development
7. Transit access
8. Public park

**Location:** I-25 to ATSF rail line.

**Neighborhood Era:** Railroad

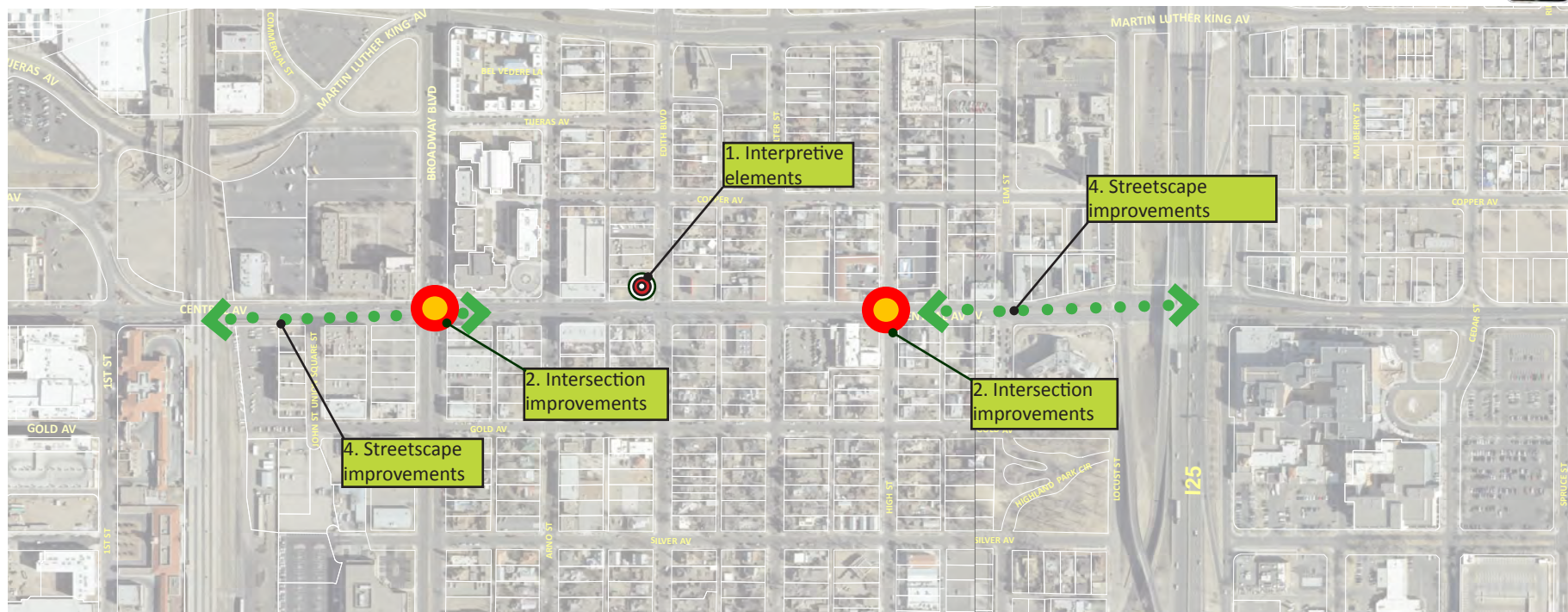
**Route 66 asset rank:** High

**Sector Development Plan:** EDo Regulatory Plan

**MR Plan:** No

**Context:** East Downtown (EDo), also known as Huning Highlands, was originally platted as a railroad suburb in 1880 and contains a healthy inventory of restored period homes. The area consists of many historic buildings, including the old Albuquerque High School (now converted into lofts), the first city public library (now the Special Collection's Library), and the Memorial Hospital (now Parq Central Hotel). With the realignment of Route 66 in 1937 and the arrival of Interstate 25 in the 1960's, this area attracted motels, diners, drive-in restaurants and other supportive businesses that are visible today.

Presently, EDo is a thriving neighborhood district, with a strong local food and retail scene. Some gaps remain, however, with some vacant lots and empty structures along Central Avenue. Most blocks are pedestrian friendly with street trees and pedestrian lighting.



 Indicates location for Route 66 public space, see Amenity Kit for more information.

*Envisioned projects and locations, see following pages for descriptions.*

**Intent:** Improvements in the EDo District are intended to highlight Route 66 features while supporting the existing pedestrian scale live/work, restaurant and retail environment and surrounding historic neighborhood. Proposed improvements include a gateway neon art piece on the I-25 and railroad overpasses, a small plaza at the Special collections Library with a Route 66 interpretive element and Public art that focus on railroad history and Route 66 at the Special Collection's Library. An enhanced transit shelter with neon and seating in proximity to the library is also proposed. Streetscape improvements along Central Avenue will address missing sidewalks and street trees. Additional improvements include an enhanced pedestrian intersection at Broadway Boulevard and Central Avenue to improve pedestrian and bicycle safety, and an additional pedestrian crossing point near the Parq Central Hotel. A comprehensive wayfinding system will lead visitors to area amenities and places of interest; including downtown and the University district.





## Chapter 3: Implementation: Recommended Projects

### Special Projects – Node 6: EDo District



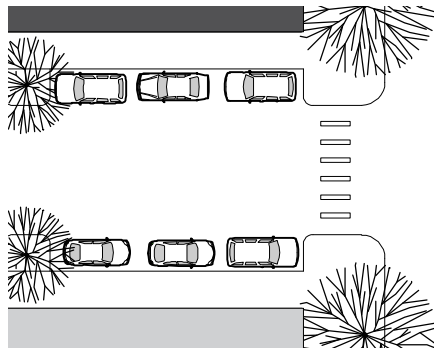
Special Collections Library, (5)

#### 1. Project: Interpretive element

**Description:** An interactive art piece or information kiosk.

**Location:** Possible locations, Special Collections Library plaza site, or vacant parcel.

- Create an Route 66 interpretive element, focus on railroad history and effects of Route 66 on area development.
- Elements should relate to the human scale and attract physical interaction.
- Elements should change with light or somehow create a dynamic environment.
- Incorporate public seating, shade and landscaping. These elements should be incorporated as part of the design of the site.



Bulbouts, (6)

#### 2. Project: Central Avenue improved intersections

**Description:** Pedestrian improvements and bulb outs to facilitate crossing.

**Location:** Broadway Boulevard and Central Avenue, an intersection near Parq Central Hotel

- Add signalized intersection at new locations.
- Use high definition crosswalk markings.
- Provide bulbouts and pedestrian refuges to reduce crossing distances.



Tempe Transit, (6)

#### 3. Transit Shelters

**Description:** Provide larger seating areas and more shade.

**Location:** Throughout EDo District.

- Provide adequate seating and shade for number of riders.
- Add shade elements where needed.
- Where possible create a shaded waiting plaza with multiple seating areas, shelters and landscaping.
- Incorporate wayfinding elements.
- Add Route 66 information.
- Add Route 66 logo and neon.
- Provide lighting.
- Create a digital hot spot for virtual Route 66 experiences.

#### 4. Streetscape Improvements

**Description:** Introduce pedestrian streetscape amenities.

**Location:** Central Avenue, I-25 to RR overpass.

- Install bulbouts and on-street parking where needed.
- Incorporate street trees and landscaping where space is available.
- Consider creating small plazas of landscaping with seating and trash receptacles on leased portions of private property where ROW is too narrow to increase pedestrian realm.
- Incorporate wayfinding system throughout EDo District.
- Create pedestrian refuges and bulb outs at Broadway Boulevard and Central Avenue intersection.



Street trees, (5)

#### 5. Innovate ABQ

**Description:** a collaborative initiative among the City of Albuquerque, UNM, and the business community to create an integrated live/work/play community.

**Location:** Northwest corner of Central and Broadway

Program includes:

- Research and commercial labs
- A business incubator/accelerator
- Science and technology companies
- Educational programs, business and support services
- Commercial/retail businesses



Innovate ABQ site, (5)